

“Nearby Corn Futures are at \$3.89, up 2 cents. Soybeans are at \$9.31.
The Iowa cmdty Corn Index is at \$3.68, while the National Index is at \$3.75.
The Iowa Basis Index is at -.21 cents, with local Boone County levels at -.26 cents.
...data brought to you by cmdty by Barchart.”



Free Tools for Ag Radio & TV

Engage your audience with agricultural market intel, unique insights, news, and market data - **Join the cmdty Media Network for free today**

Learn the Benefits Inside...

Member Benefits

Receive these free tools

1

Provide your audience with unique and insightful ag market data that is local to their area

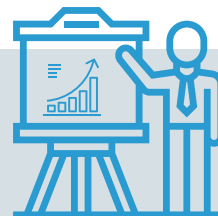


Receive a free cmdtyView Pro account with grain prices, market news, weather and charting

2

3

Connect with ag market analysts so you can access resourceful market commentary

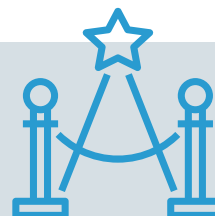


Multimedia and social media collaboration opportunities to help grow your network

4

5

Entry to exclusive commodity events that highlight your brand as an official media sponsor



What is Required From You?

All that we require is attribution when broadcasting cmdty by Barchart data and information.

That's It!

How to Join:

1

Complete a Member Application on our website at www.barchart.com/agnetwork

2

Or call us at [312.283.2387](tel:312.283.2387) to learn more about the network, member benefits, and tools

3

We will review your application and contact you once you are approved

4

Schedule training with a member of our team to learn more about our data and tools

5

Engage your audience with more insightful data and information from cmdty

6

Attend exclusive cmdty events where you will be listed as an official media sponsor

Quickly access the ag market information that matters most to your audience

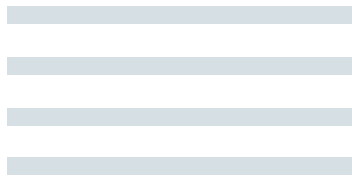
Your Dashboard

Summary Indexes



Local Elevator Bids

50501 Webster County, IA



Weather Forecasts

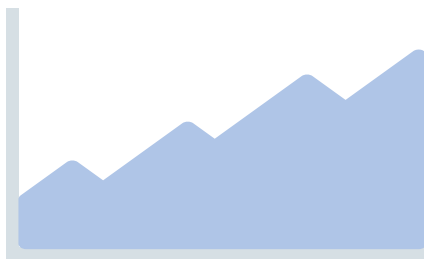


News Headlines



USDA Headlines
WASDE Report
comdtyNewswires

Charting



Futures Prices

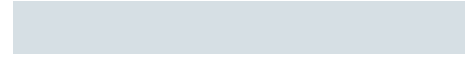


Custom Panels

What is the best basis in my area?



Where are local grain prices changing?



What are market analysts saying?



“Corn futures are showing fractional gains at midday. Cargill in Webster County, Iowa is currently showing Dec19 Corn at \$3.77 per bushel, up 4 cents. Mar20 Corn is sitting at \$3.71 per bushel, up 3 cents. In comparison, the comdty National Corn Index is at \$3.59, up 2 cents.”

Our Clients and Partners Include



Become a Member of the cmdty
Media Network for Free Today!

www.barchart.com/agnetwork

Data Solutions Built for Commodity Professionals

cmdty delivers the data, solutions, and insights that commodity professionals need to drive their business.

Our offerings are built for the most demanding of users - and are designed to be smart, transparent, and easily integrated into any client solution.

#0FB4BB

Contact us at cmdty@barchart.com
or visit us at www.barchart.com/cmdty